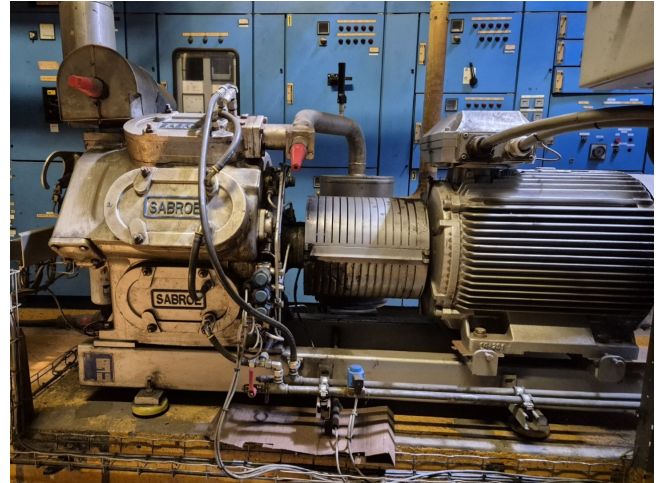


Sabroe SMC 108 S

Specifications

Brand	Sabroe
Type	SMC 108 S
Refrigerant	NH 3 (ammonia)
kW at +10°C/+40°C	571,1
kW at 0°C/+40°C	373,1
kW at -5°C/+40°C	294,4
kW at -10°C/+40°C	227,6
Electromotor Specs	50 Hz - 90 kW - 1463 RPM
Unloaded Start	✓
Capacity Control	✓
On steel base frame	✓
Pressure safety switches	✓
Hp/Lp/Op	
Pressure gauges	✓
Hp/Lp/Op	
Oil separator	✓
Sight Glass	✓
m3 / h	452
Remarks	Y.o.b. 2011
Stock	1



Description

Used Sabroe SMC 108 S

Used Sabroe SMC 108 S reciprocating compressor on R717 (Ammonia). Complete with an ABB electric motor - 50 Hz - 90 kW - 1463 RPM, oil separator, pressure and safety switches/gauges. The compressor has a displacement of 452 m³/h.

*Why choose for HOSBV? Were not only the largest used refrigeration specialist in Europe, but also, we deliver all equipment including an extensive test, warranty and industrial cleaning.

*Optional we can also perform a new paint job and arrange the logistics.

